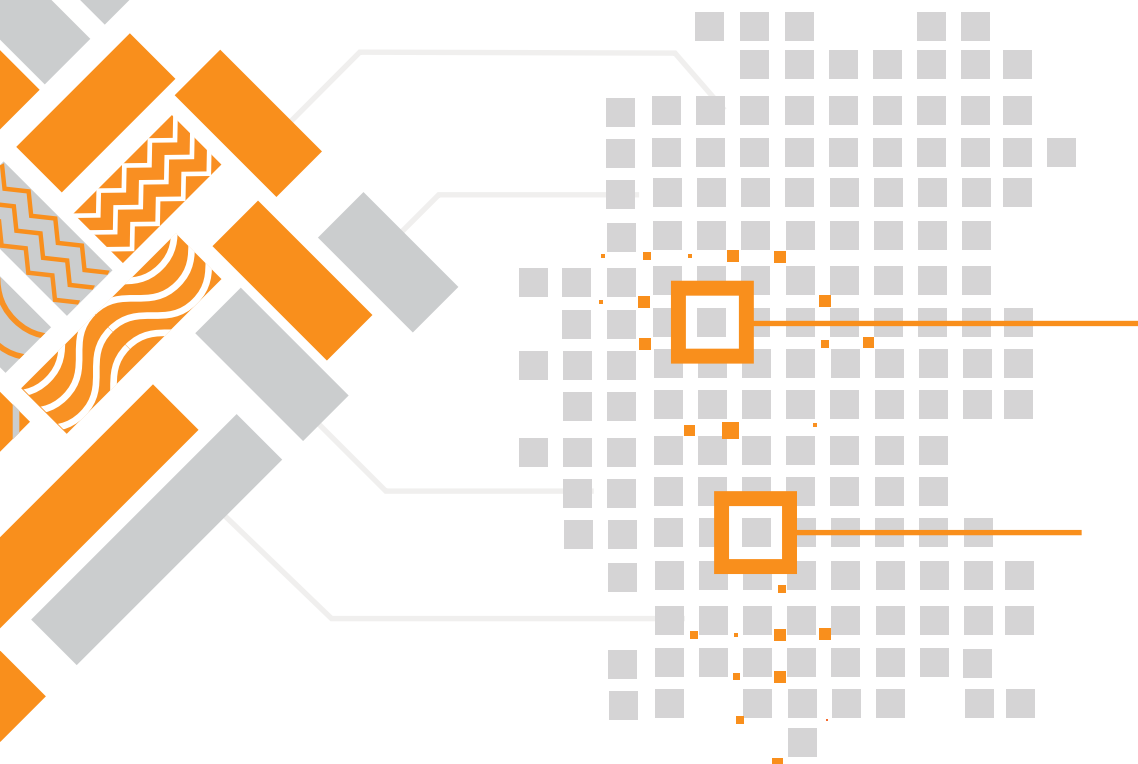


## TEAMWORK TERRITORY

Office in Germany



Leverkusen



Stuttgart

**STRICT**

### TEAMWORK Business unit MMBC Sagl

Via Motta 24 · 6830 Chiasso (Switzerland)  
+41 (0) 91 6822572  
teamwork@mmbc.eu teamwork.mmbc.eu



Business Unit MMBC Sagl

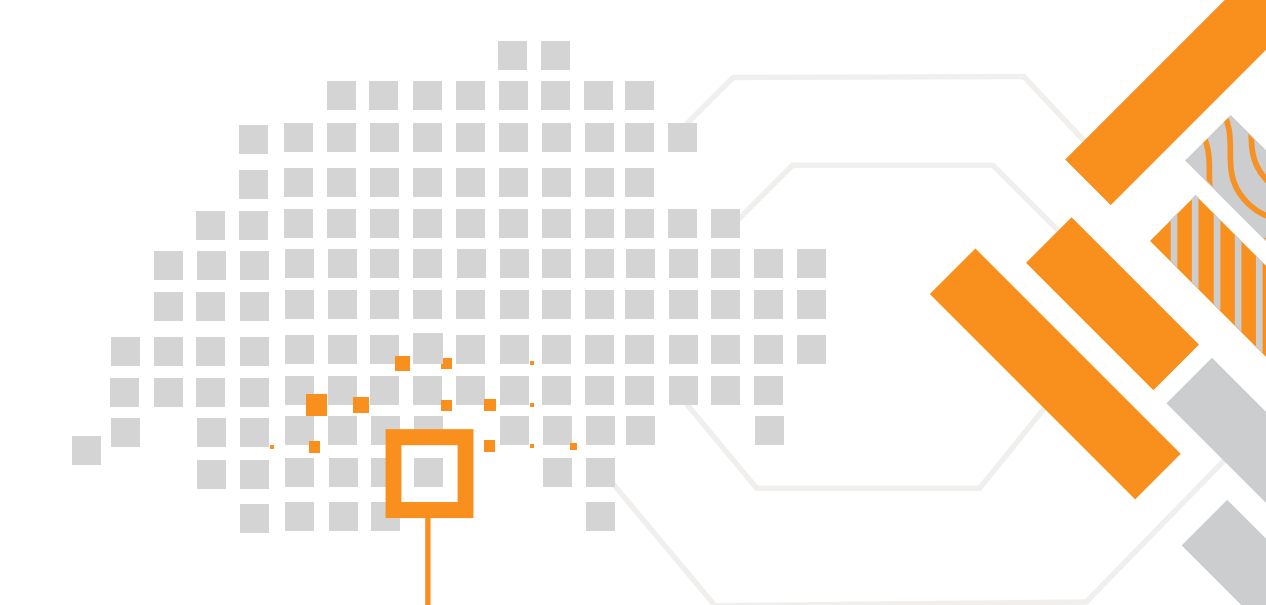
# THINK DEVELOP SOLVE



Business Unit MMBC Sagl

## TEAMWORK HEADQUARTER

Chiasso, Switzerland



**OUR DI**

## TEAMWORK: WHEN INDUSTRIES OPPORTUNITY ARISE FROM FRIENDSHIP



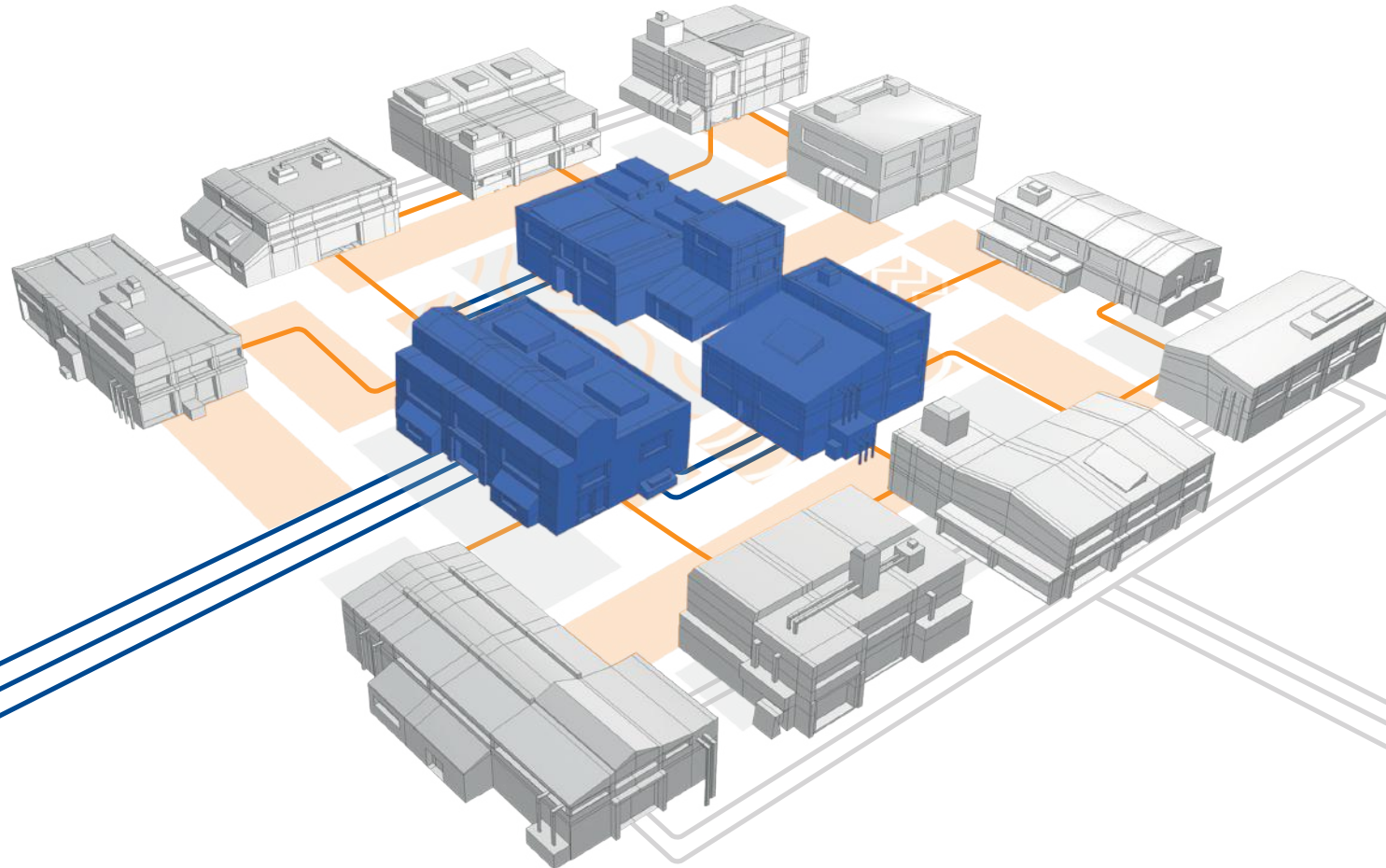
**MMBC**  
Mauro Mottola Business Consulting

### Mauro Mottola, MMBC - TeamWork Founder and Team Leader

MMBC Sagl has been successfully promoting the **internationalization of small and medium-sized enterprises** since 2005; in particular it offers **effective tools** and long-term **cooperation** between **Italian and German companies**: advice, help and support in all phases of the business.

Active in the industry and especially in the **automotive sector**, MMBC has been promoting since **2011**, coordinating the activities of a **network of Lombard companies** that work synergistically for the **German market**, a reality driven by **teamwork** based on partnerships, consolidating its presence at international level through participation in fairs and events trade.

### FOUNDERS



### THE NUMBERS

Partner companies: **37**  
 People: **603** | Technicians: **121**  
 Different pieces produced in 2023: **871 Millions**  
 2023 revenue: **239 millions Euro**

### PARTNERS



## TEAMWORK PERFORMS

Teamwork is a group of companies in Lombardy, Italy, characterized by a strong **complementarity of production**. The group was created with the aim of integrating the respective potentialities of its members, all united in their commitment to excellence.

Teamwork - drawing on the experience of five medium-sized companies in the engineering sector, located in close geographical proximity to each other, sharing the propensity for innovation, product quality and the ability to act in foreign markets - is a highly cohesive group, members of which are capable of working both together and independently, always upholding the highest quality standards.

Teamwork is a partnership of considerable ability, size and annual revenue. These accomplishments have been achieved thanks to the daily commitment of our group's **roughly 600 workers**, and to the variety and complementarity of our production and processing, which follow a long and well-established tradition capable of **continuously evolving in response to both technological advances and market demands**.

- ✓ Production of special cold-worked steels
- ✓ Hot stamping of stainless steel and brass
- ✓ Die Casting aluminium alloys from 150t to 2500t
- ✓ Gravity Die Casting
- ✓ Cast iron, Gray cast iron
- ✓ Cold pressed steel and deep drawing up to 6mm
- ✓ Micro Die Casting
- ✓ General blanking and fine drawing
- ✓ Manufacture of busbars and pins with surface treatment
- ✓ Construction of elastic components from wire and tape
- ✓ Hard and natural anodic oxidation on aluminium
- ✓ Heat treatment of steel and non-ferrous metals
- ✓ Trade, production and processing to measure, pipes, strips and steel sheets
- ✓ Bending, grip rings, separating rings, sleeves, bushings, caps and many other technical components and materials according to customer needs
- ✓ Packaging systems of all products
- ✓ General mechanical/fine mechanical processing: turned and milled parts, for small and high volumes, also for large and heavy mechanical processing on 5-axis machines
- ✓ Metal surface treatment, burnishing, zinc and manganese phosphating
- ✓ Liquid and powder coating
- ✓ Molding construction rubber and plastic injection
- ✓ Plastic injection molding 2K parts and special parts in high volume
- ✓ Rubber/Plastic injection molding with metal parts, special parts and high volume
- ✓ Robotized and automated industrial process
- ✓ Shipping and packaging
- ✓ Cast iron and gray cast iron
- ✓ Forging
- ✓ General Punching and fine Punching
- ✓ Plastic injection molding with Pins, Busbars and special Punching parts
- ✓ Thermoforming packaging solutions for product handling and logistics
- ✓ Production of sliding bearings for Automotive industry
- ✓ Metal forging and precision machining
- ✓ Certifications: Automotive IATF 16649, Aerospace AS 9000, Environment 14001

Teamwork is ready for the challenge; ready for the idiosyncrasies and demands of new economic and commercial ventures abroad, while remaining true to its **mission: THINK - DEVELOP - SOLVE**.